

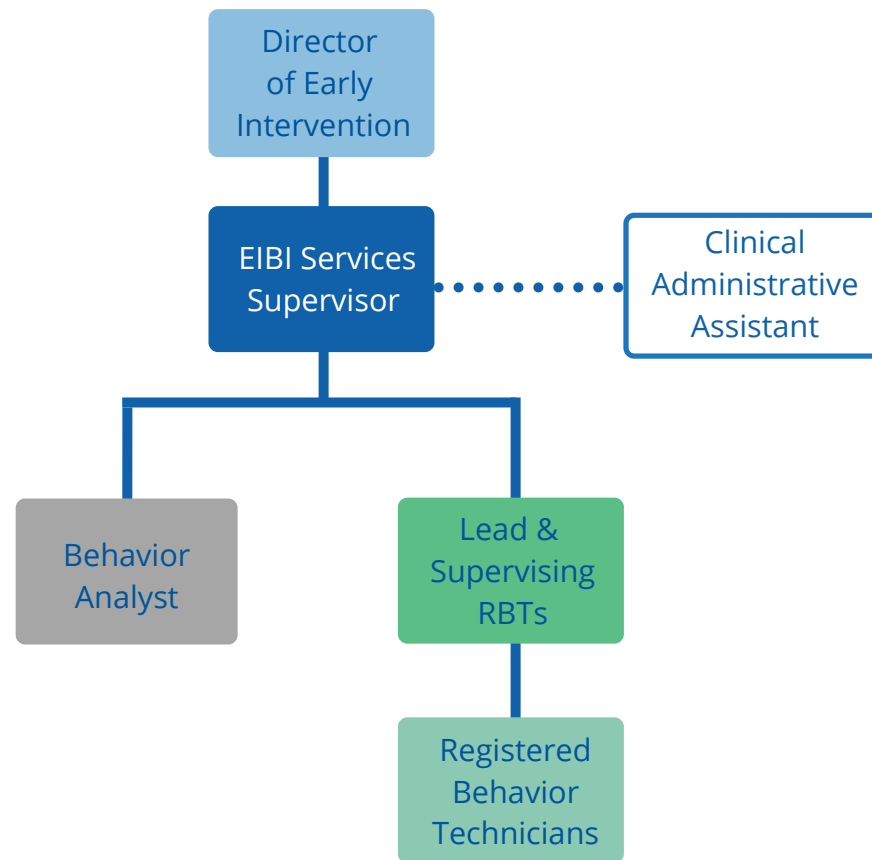
Early Intervention

Leadership Directory
for Parents & Guardians

2022



Organizational Chart



Primary Points of Contact

At Vista Autism Services, we value communication and appreciate an open exchange of information, questions and concerns. This FAQ topic chart will help you determine the best point of contact when reaching out to Vista staff within the Early Intervention program.

Question Topic	Primary Staff Contacts
Unexpected events, running late, calendar	Clinical Administrative Assistant
General updates about child that day or prior evening (e.g. up late, bad morning, didn't eat)	Registered Behavior Technicians (call the room or comment at drop off)
Changes to attendance schedule, daily room schedule, schedule of SLP/OT/PT, staff rotation with children, concerns with RBTs	Lead & Supervising RBTs
Individual programming for child, goals, interventions, addressing behaviors, parent trainings	Behavior Analyst
Program structure, program model, concerns with staff	EIBI Services Supervisor

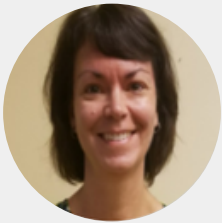
Leadership Directory



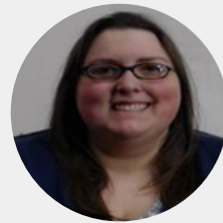
Jessica Earhart
Behavior Analyst
jessica.earhart@vistaautismservices.org
717-835-1116 x1817



Abigail Kolmer
Lead & Supervising Registered Behavior Technician
abigail.kolmer@vistaautismservices.org
717-835-1116 x1816



Sandy Heisey
Clinical Administrative Assistant
sandra.heisey@vistaautismservices.org
717-835-1116 x1802



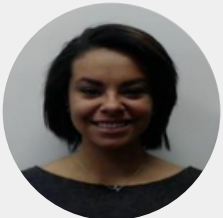
Kayse Lawton
Lead & Supervising Registered Behavior Technician
kayse.lawton@vistaautismservices.org
717-835-1116 x1824



Jenna Hutchinson
Behavior Analyst
jenna.hutchinson@vistaautismservices.org
717-835-1116 x1823



Kendra Peacock
Director of Early Intervention
kendra.peacock@vistaautismservices.org
717-583-5102 x1109



Krystal Joubert
Lead & Supervising Registered Behavior Technician
krystal.joubert@vistaautismservices.org
717-835-1116 x1822



Amy Woodward
Behavior Analyst
amy.woodward@vistaautismservices.org
717-835-1116 x1821



Sandra Kachelries
EIBI Services Supervisor
sandra.kachelries@vistaautismservices.org
717-835-1116 x1803